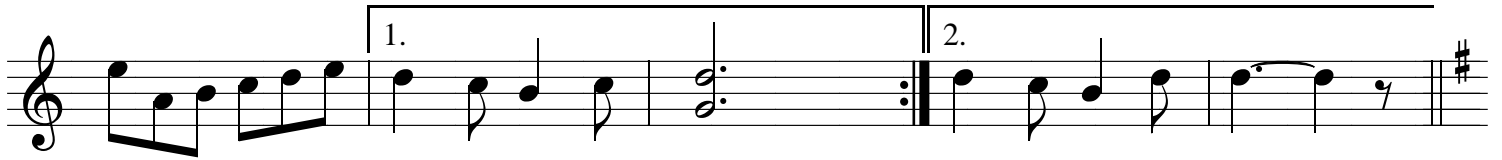
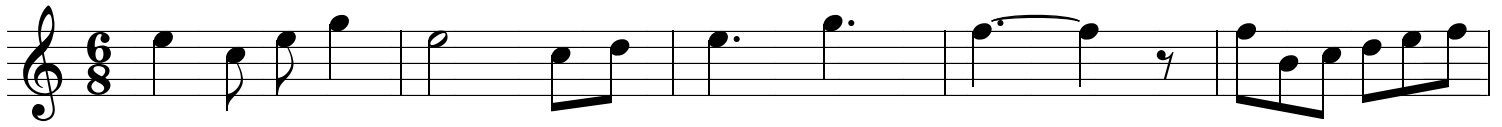
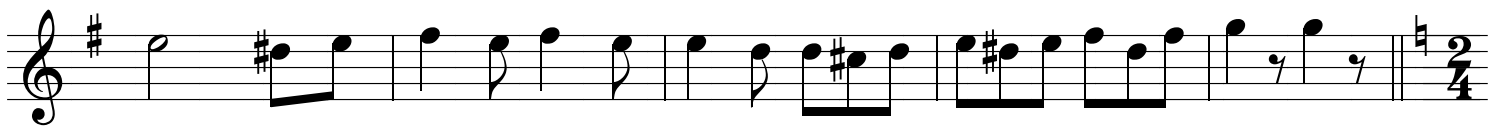
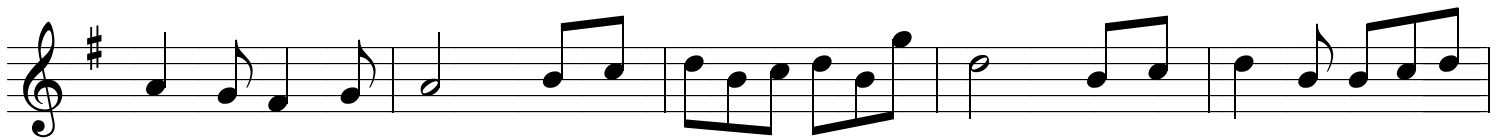
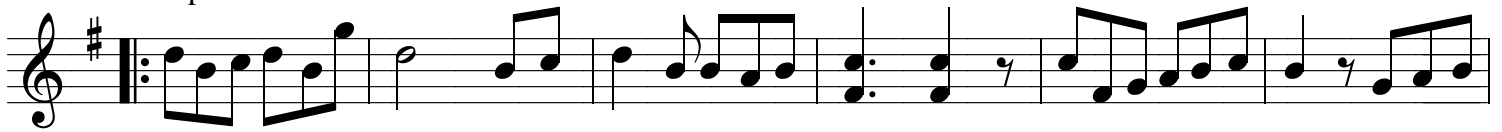


Traditionnel

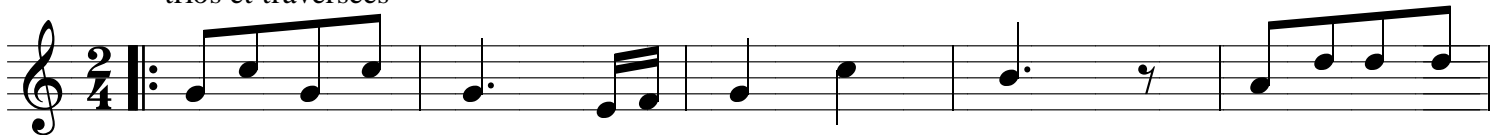
♩. = 114 la forteresse



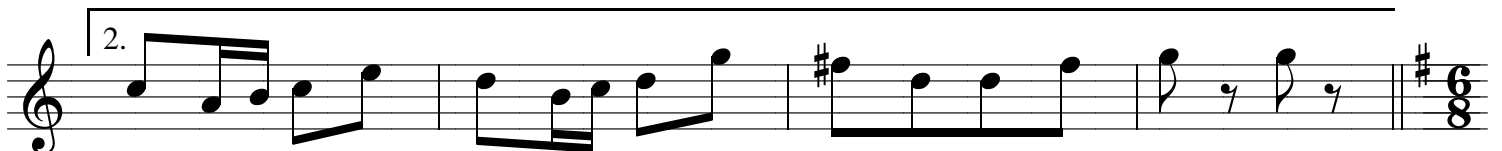
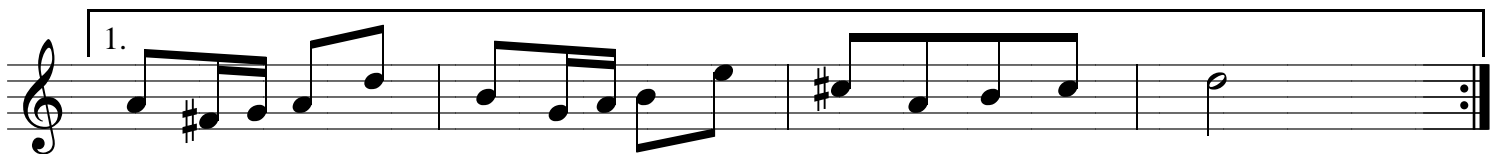
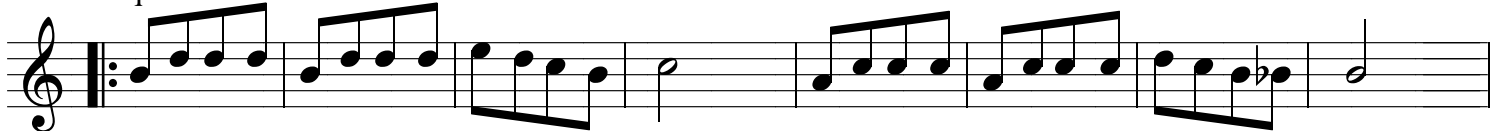
prenez les dames



trios et traversées



quadrilles et tours de mains



ronds et moulinets

Musical notation for 'ronds et moulinets' in G major, 6/8 time. The piece consists of three staves of music. The first staff begins with a treble clef, a key signature of one sharp (F#), and a 6/8 time signature. The melody is composed of eighth and quarter notes, with some dotted rhythms. The second and third staves continue the melodic line, featuring various rhythmic patterns and rests.

queue du chat et chaine anglaise

Musical notation for 'queue du chat et chaine anglaise' in G major, 2/4 time. The piece consists of two staves. The first staff starts with a treble clef, a key signature of one sharp (F#), and a 2/4 time signature. It features a series of eighth and quarter notes. The second staff continues the melody, including a first ending (marked '1.') and a second ending (marked '2.'). The piece concludes with a 2/4 time signature.

le labyrinthe et les prisonniers

Musical notation for 'le labyrinthe et les prisonniers' in G major, 2/4 time. The piece consists of five staves. The first staff begins with a treble clef, a key signature of one sharp (F#), and a 2/4 time signature. The melody is primarily composed of eighth and quarter notes. The second and third staves continue the melodic line. The fourth staff features a series of eighth notes. The fifth staff concludes the piece with a 6/8 time signature.

el doudou

arceaux

promenade et tourniquets

To Coda

Coda